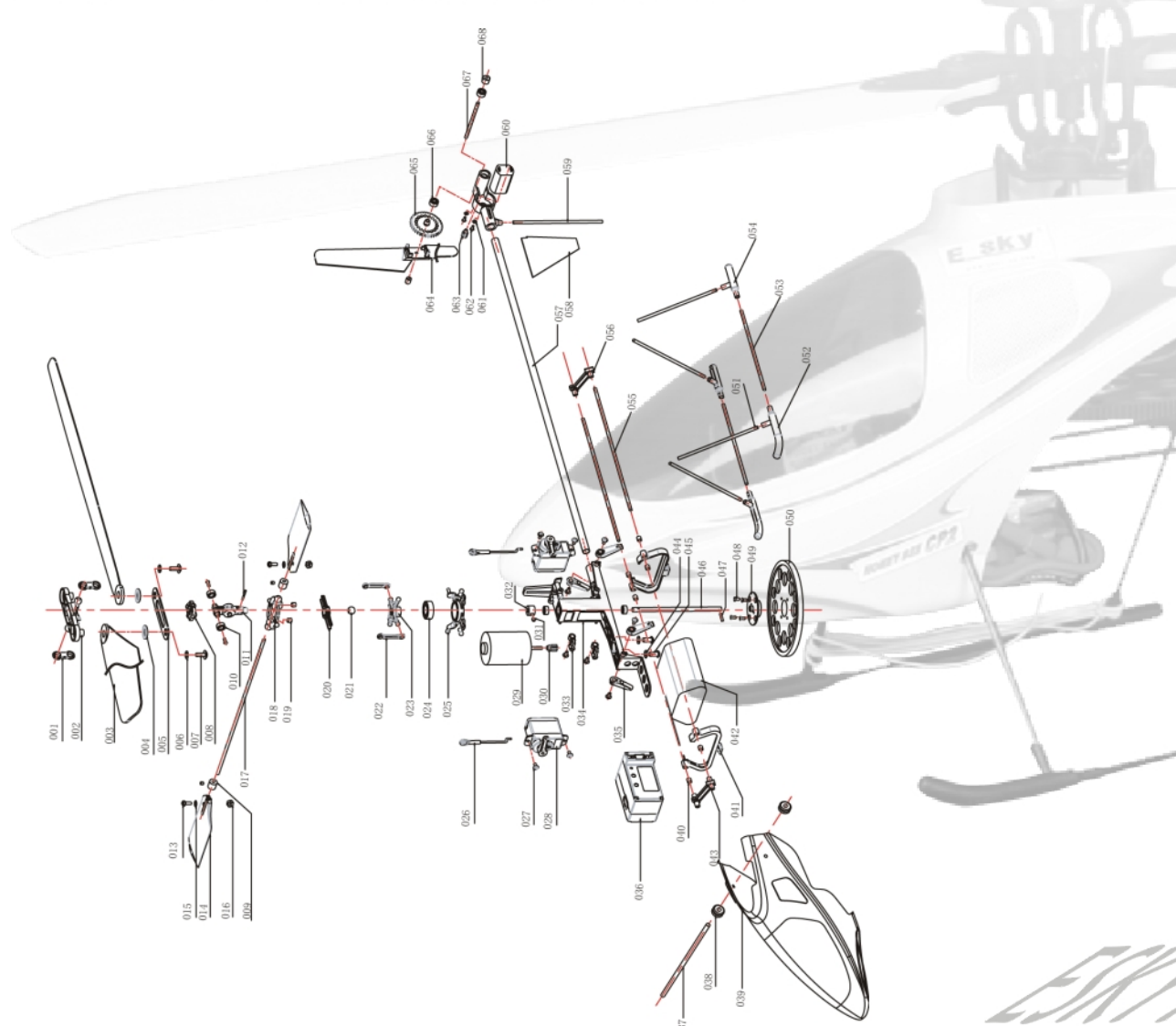


**SPECIFICATION OF HONEY BEE**

000515

Item No.	Description	Qty. needed in one helicopter	Item Number	Description	Qty. needed in one helicopter
001	Main blade control link	2	035	Ball link	2
002	Main blade mount	1	036	4in1 controller	1
003	Main blade	2	037	Cabin fixed bar	1
004	Fixed collar	2	038	Grommet	4
005	Stator for main blade	1	039	Cabin	1
006	Washer	2	040	PVC tube	8
007	Cap screw (M2.5)	2	041	Battery holder	2
008	Rotor head	1	042	Battery pack	1
009	Collar	2	043	Bar joiner	2
010	Bearing (6*3*2.5)	4	044	Main motor washer	1
011	Center hub	1	045	Main motor screw (M3)	2
012	Bushing	2	046	Main shaft	1
013	Screw (M2.6)	2	047	Main shaft pin	1
014	Paddle	2	048	Main gear screw	4
015	Washer	2	049	Main gear fix.set	1
016	Nut	2	050	Main gear	1
017	Fly-bar	1	051	Strut A	4
018	Paddle control frame(outer)	1	052	Skid A	2
019	Socket head cap screw(M3)	2	053	Strut B	2
020	Rotor bar	1	054	Skid B	2
021	Copper ball	1	055	Battery hanger bar	2
022	Paddle push-rod	2	056	Bar joiner	2
023	Swash-plate	1	057	Tail boom	1
024	Bearing (13*7*4)	1	058	Vertical fin	1
025	Swash-plate (outer)	1	059	Tail protect bar	1
026	Servo push-rod	2	060	Tail motor	1
027	Screw for servo(pw1.7*4)	4	061	Washer	2
028	Servo	2	062	Screw(M1.3)	2
029	Main motor	1	063	Tail motor pinion	1
030	Main motor pinion	1	064	Tail blade	1
031	Socket set screw (M3)	3	065	Tail gear	1
032	Set collar	1	066	Bearing (2*6.3)	2
033	Servo control	2	067	Tail rotor shaft	1
034	Main frame	1	068	Spacer	1



**Exploded view**

000515

**1. Content:**

- 1). A complete honey bee ready to fly.
- 2). 8.4V/ 650mAh Ni-MH battery pac
- 3). wall charger for battery
- 4). Standard PPM transmitter (4CH)  
EK2-0404

**2. Specification**

- 1). Main rotor diameter: 520mm
- 2).Fuselage length: 520mm
- 3).Max all-up-weight: 290g
- 4).Power: 8.4VNi-MH battery pack
- 5).Radio: 4CH/PPM

**3. Description**

- ★ Pre position servo mounts for easy setup
- ★ Carbon fibre fly-bar and boom for superior strength and durability.
- ★ High performance main electric drive motor for extended duration flight.
- ★ Unbelievable flight performance 12 minutes on 7cell Ni-Mh battery
- ★ Ready for flight out of box except 8 AA battery (sold separate)

**000515**

**ORDER NO. ILLUSTRATION**

 Tail motor 8T 0.5m 000207	 Main motor 10T 0.5m 000156	 Charger 230V (UK) 000164	 Charger 220V (china) 000167
 Charger 110V (USA) 000166	 Charger 230V EUROPEAN 000165	 8.4V 650mAh Ni-MH battery 000169	 Rotor head set 000187
 Main blade 000188	 Control link main blade 000189	 Center hub set 000190	 Fly bar 000191
 Paddle control frame(outer) 000192	 Swashplate set 000193	 Servo Push-rod link set 000194	 Battery hanger 000195
 Bearing 3*6*2.5 000196	 Tail rotor housing 000197	 Vertical fin set 000205	 Tail rotor drive & shaft set 000199
 bearing 2*6*3 000200	 Tail rotor blade 000201	 Training sets 000202	 Mounting fastener & wrench 000204

 Tail motor heat sink 000208	 Main motor heat sink 000209	 Screws/nuts/washers 000210	 Main & tail motor wire 000211
 Paddle set 000216	 Main shaft drive gear set 000223	 Skid set 000224	 Batter support &skit set 000225
 Main frame assembly 000233	 Main axis 000237	 Shaft retaining collar 001097	 Flybar balance weight 000238
 Servo control set 000239	 4in1 mixing controller 35M 000108 36M 000109 40M 000110 41M 000111 72M 000112	 Servo 000155	 Cabin 000242
 4CH transmitter Model 1/Model 2 35M 001642 000076 36M 001643 000077 40M 001644 000078 41M 001645 000079 72M 001646 000080	 Coach wire 000500	 Softdog for FMS 000499	 000173
 000152	 000512		