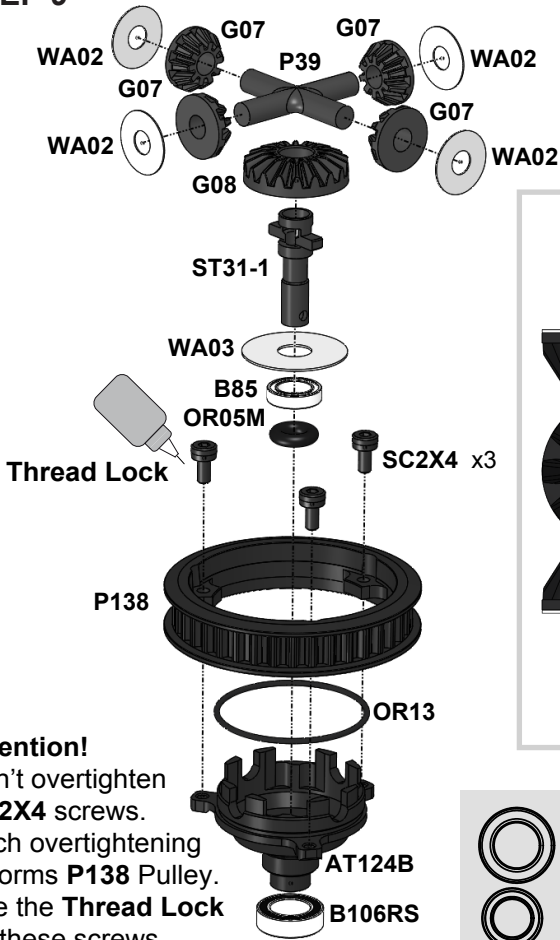
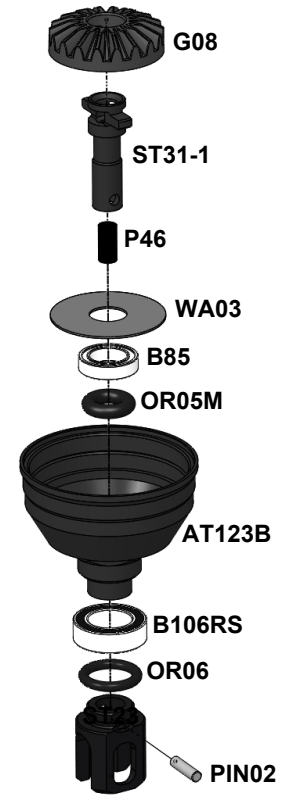
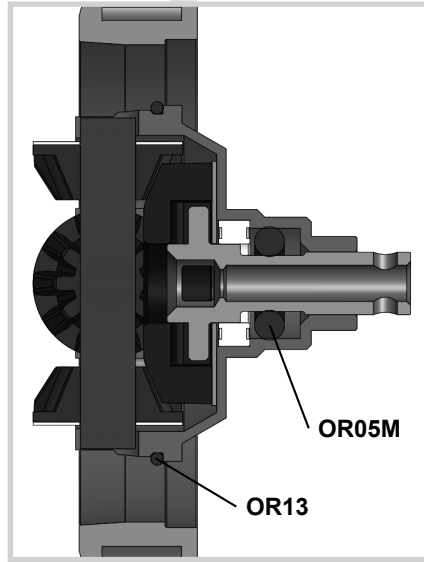


### STEP 9



**Attention!**  
Don't overtighten **SC2X4** screws. Such overtightening deforms **P138** Pulley. Use the **Thread Lock** for these screws.

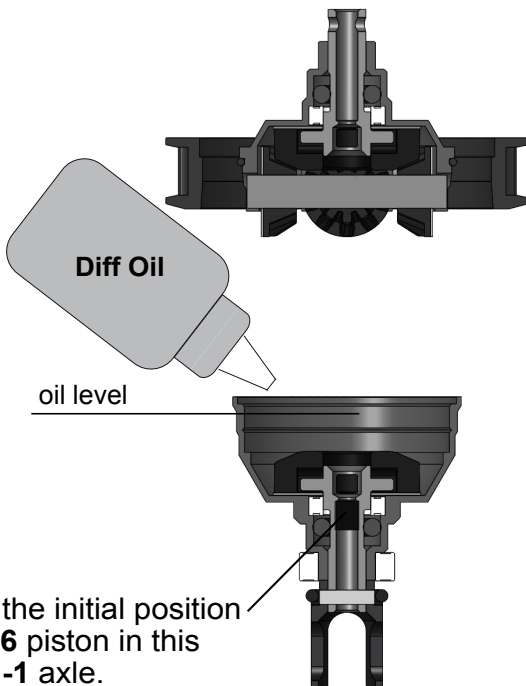
### STEP 10



	<b>B106RS</b>	MR106RS Bearing	x2	<b>AT123B</b>	GD2B Case1	x1
	<b>B85</b>	MR85 Bearing	x2	<b>AT124B</b>	GD2B Case2	x1
	<b>OR05M</b>	O-Ring	x2	<b>P138</b>	38T Pulley	x1
	<b>OR06</b>	O-Ring	x2	<b>ST23</b>	GD Outdrive	x2
	<b>P46</b>	Sponge Piston	x2	<b>ST31-1</b>	GD2 Output Axle	x2
	<b>PIN02</b>	1,5x5,8 Pin	x2	<b>P39</b>	GD2 Cross Pin	x1
	<b>SC2X4</b>	M2x4 Cap Head screw	x3	<b>OR13</b>	13 mm O-Ring	x1
				<b>G07</b>	GD2 Satellite Gear	x4
				<b>G08</b>	GD2 Bevel Gear	x1
				<b>WA02</b>	3.5x9.5x0.2 Washer	x4
				<b>WA03</b>	5x15.5x0.3 Washer	x2

### STEP 11

Fill with desirable silicone oil (not included). Screw **AT123B** GD2B Case with 10mm wrench slowly. The excessive oil will go out through the **ST31-1** axial hole.



Note the initial position of **P46** piston in this **ST31-1** axle.

### STEP 12

